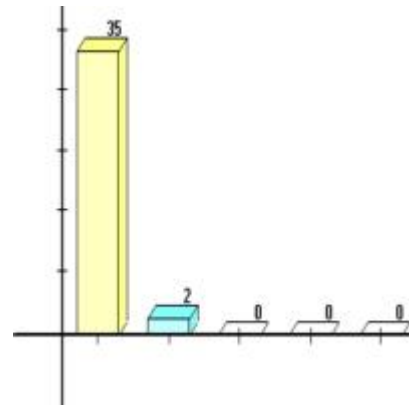


## SUMMARY OF DATA FROM APRIL 8 2008 MARC CONFERENCE

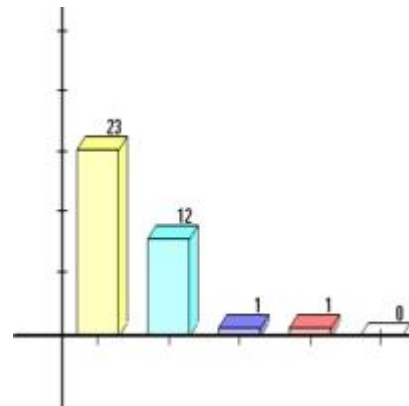
**Overall, how knowledgeable were today's presenters?**

- A. Very
- B. Somewhat
- C. A little
- D. Not at all



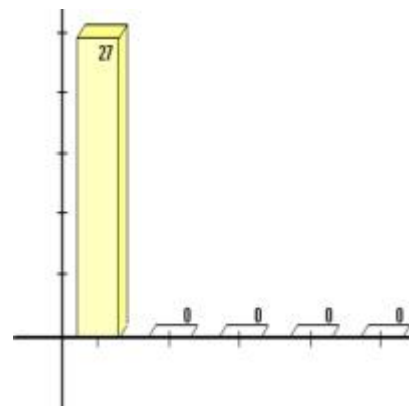
**What was your overall impression of the program?**

- A. Very positive
- B. Positive
- C. Neutral
- D. Negative
- E. Very negative



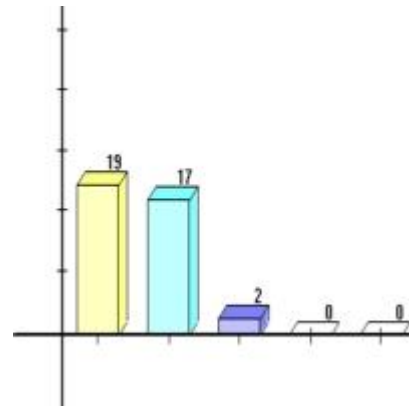
**Would you actively recommend MARC conferences to fellow peers and coworkers?**

- A. Yes
- B. No



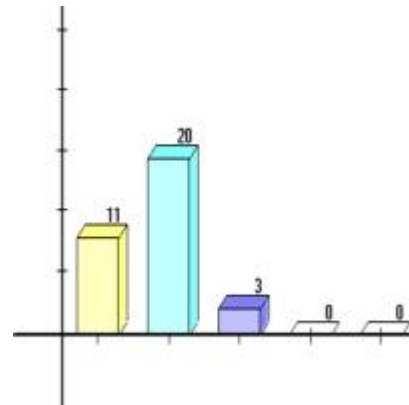
Will the information presented today be useful to you in the future?

- A. Very
- B. Moderately
- C. Slightly
- D. Not at all



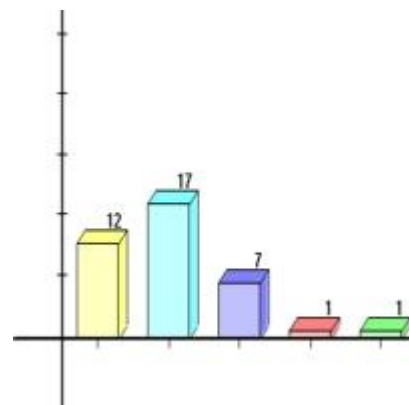
Did the day differ from what you expected?

- A. It was more useful or relevant than I expected
- B. I expected it to be relevant and useful, and it was
- C. It was less useful and relevant than I expected
- D. I expected that it would not be useful or relevant, and I was right
- E. I had no specific expectations



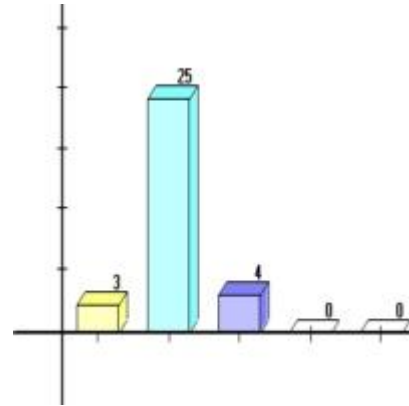
How has the level of your knowledge changed, compared to this morning (regarding medication issues and children's behavior)?

- A. It increased significantly
- B. It increased moderately
- C. It increased a little
- D. It did not increase, or it decreased



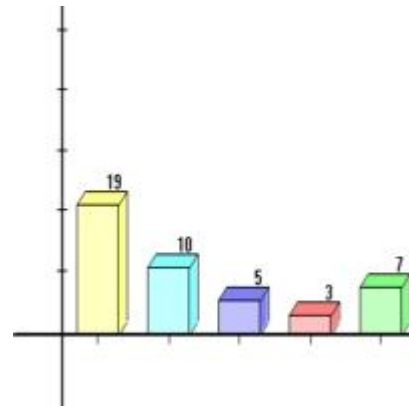
**After attending this event, do you feel more prepared to deal with these issues in your school/workplace?**

- A. Much more prepared
- B. Somewhat more prepared
- C. Neutral – the same



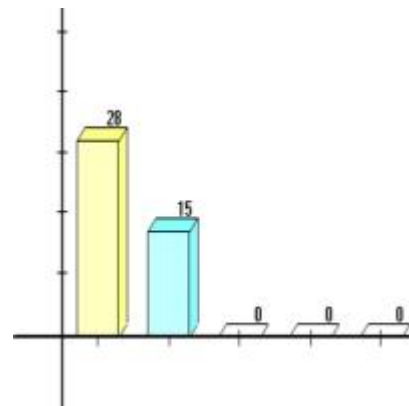
**In your opinion, why do educators fail to attend conferences (here or anywhere)?**

- A. School won't pay registration fee
- B. School did not want to approve a substitute
- C. Person didn't see any tangible benefit
- D. School did not believe the conference topic was worthwhile
- E. Conference occurs on a day when person cannot miss work (testing, etc.)



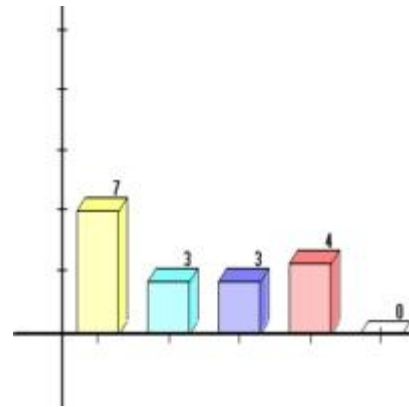
**Is this your first time attending a MARC conference?**

- A. Yes
- B. No



If this is **not** your first time attending a MARC conference, how many conferences have you previously attended?

- A. One
- B. Two
- C. Three
- D. More than three



What is your professional position?

- A. K-12 Administrator
- B. K-12 Faculty
- C. K-12 Staff
- D. K-12 Guidance, Adjustment Counselor, or psychological staff
- E. Human services professional or Law Enforcement

