

# Social Robotics

Robotics  
Bridgewater State University

# Admin

- Quiz
- Project?

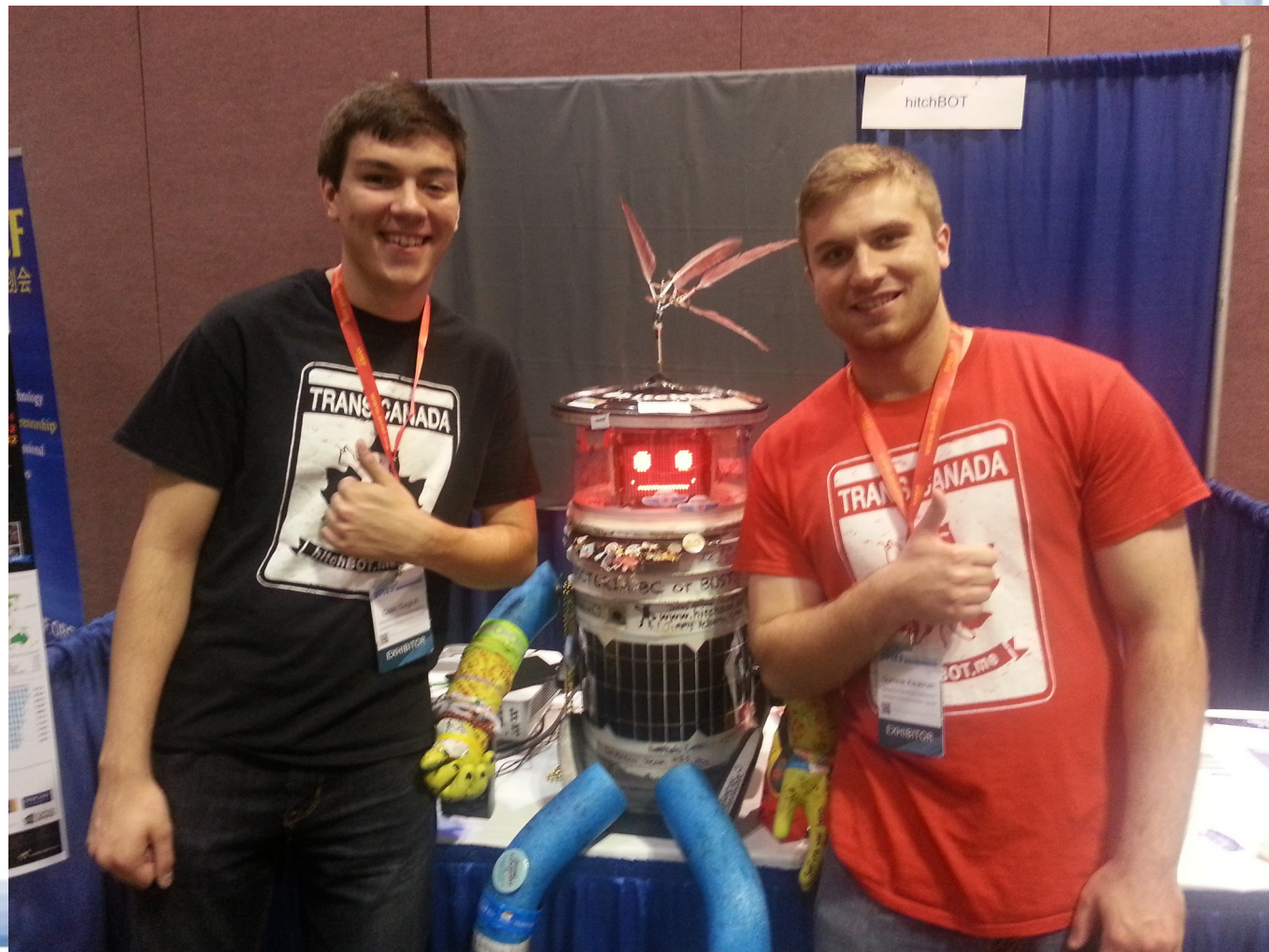
# Social Robots

- What are social robots?
  - robots working with people
  - not just tech people
  - need to be accepted by people
  - more than just these



# Hitchbot

- Does anyone remember the story of hitchbot?





# Hitchbot

- It all worked out great till it started in Boston and went down the US East Coast
- Philly:



# Human Acceptance

- Humans more accepting of what they understand
  - ramifications for robotics?
  - approaches?

# Human Acceptance

- Humans more accepting of what they understand
  - ramifications for robotics?
  - approaches?
    - make robots look more like what humans already know
      - humans
      - dogs
      - etc
    - make robot purpose easily understood.
    - situate robot in familiar surroundings

# Interface

- Human Robot interface vs Human Computer Interface
  - similar goals
    - help people accomplish task/work with machines
  - classic UI guidelines still apply
    - feedback, mapping, affordance etc
  - but some differences
    - robots far more interactive
      - some difference roles (mentor, peer)



# Social Robots

- Where are we now with this?
- Pepper:
  - <https://www.youtube.com/watch?v=e3v4xsoYrP4>
- And of course this Disney Stuff
  - [https://www.youtube.com/watch?v=D8\\_VmWWRJgE](https://www.youtube.com/watch?v=D8_VmWWRJgE)
- Last year's stuff
  - <https://www.youtube.com/watch?v=R3pH5tMKYxY>
- This year?
  - <https://www.youtube.com/watch?v=2HQ84TVcbMw>

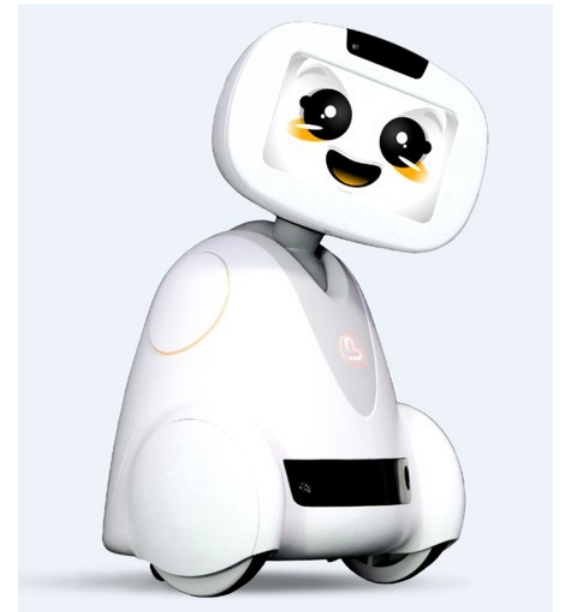
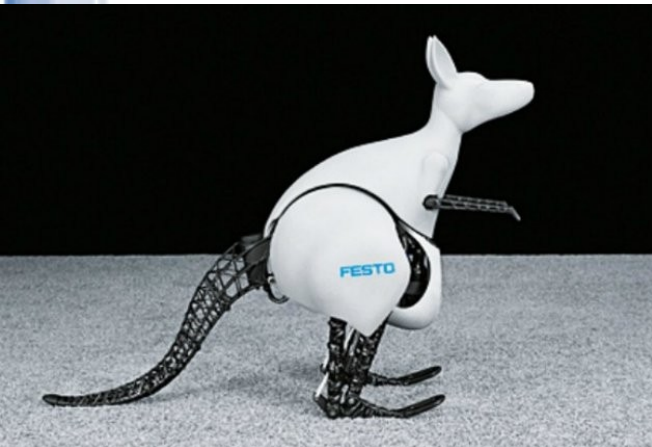
# Appearance

- robots closer to appearances we know more accepted
  - a likable robot? What does it do?
  -



# Appearance II

- Adding features to make the robot more familiar puts people at ease





# Apearance III

- Up to a point – then unease sets in
- 





# Not to mention



# Human looking robots, Why?

- There are some good reasons for human looking robots
  - Best example: dental training robots.
  - <http://www.youtube.com/watch?v=WhzbFaNueKU>



# Behavior

- Not just appearance, but behavior matters.
- Robots that exhibit the right social cues with their behavior are more accepted.
- Both by people and dogs





# Dog Study

- Study published in *Animal Cognition* (summer 2013)
  - Basic finding: dog were able to identify more social robots and interacted with them better.
  - Details of experiments
    - Two groups of interactions, social and non-social
    - In all cases dogs interacted with human better than with robots.
    - But interacted with social robots better than asocial robots.



# Ethics digression

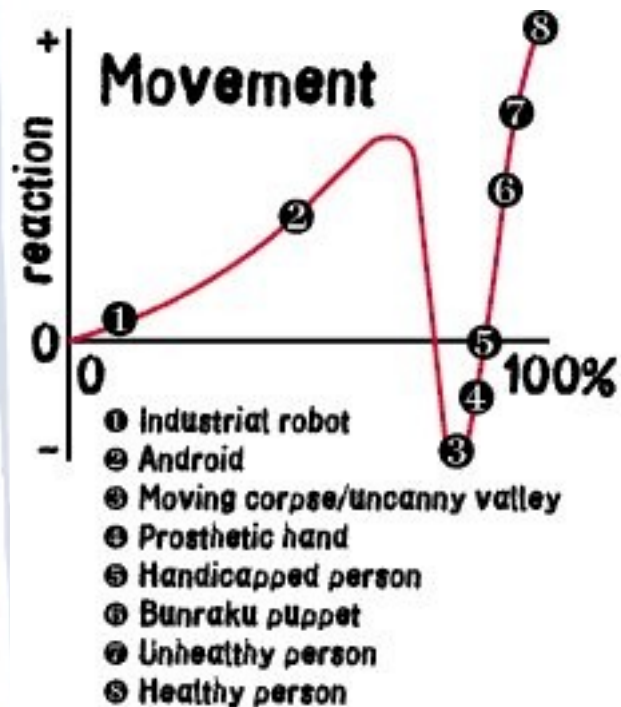
- prediction that Massachusetts will be first place in world with robot marriage laws in 2050
  - <http://www.livescience.com/1951-forecast-sex-marriage-robots-2050.html>
- gives a bit of time to work out troubles with the systems.
  - Issues?

# Ethics digression

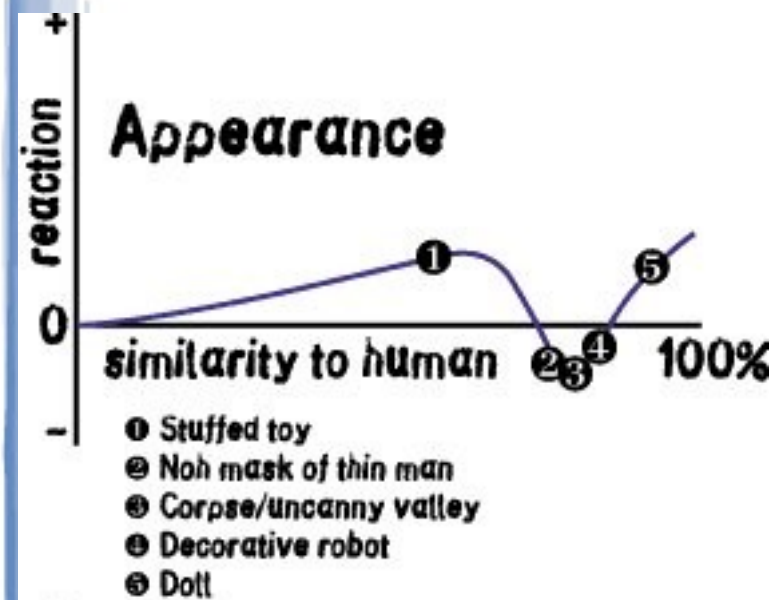
- prediction that Massachusetts will be first place in world with robot marriage laws in 2050
  - <http://www.livescience.com/1951-forecast-sex-marriage-robots-2050.html>
- gives a bit of time to work out troubles with the systems.
  - Issues?
- What about this:
  - <https://english.elpais.com/technology/2025-02-23/designed-by-men-for-men-why-sex-with-robots-does-not-have-appeal-among-women.html>
  - <https://www.youtube.com/watch?v=x3MnHO8xclk>

# Uncanny Valley.

- Masahiro Mori, 1970



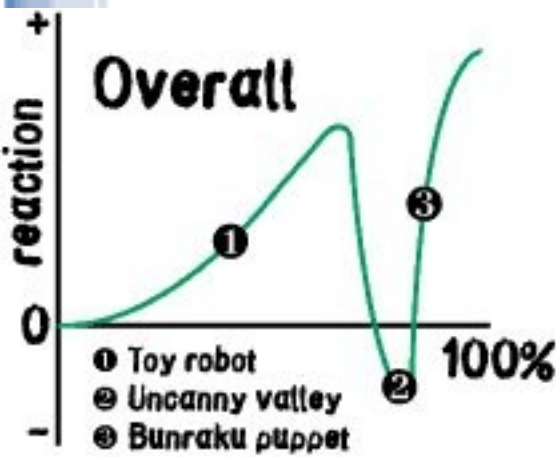
# Uncanny Valley II



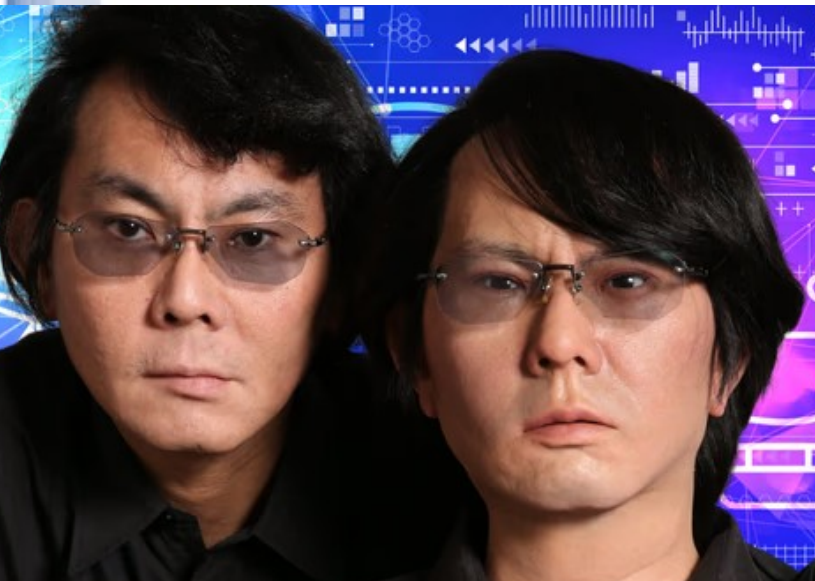
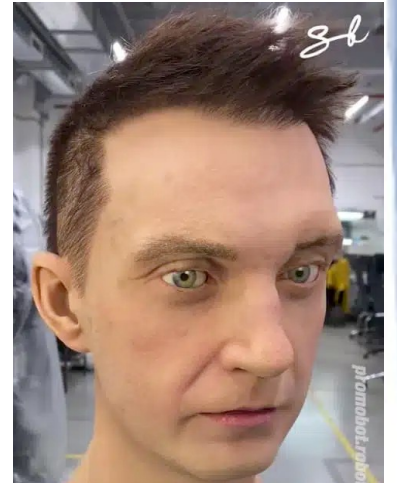


# Uncanny Valley III

- more acceptance up to point
  - then close to real but *wrong* causes revulsion for a bit till at ideal
  - not just humans



# Uncanny valley - people



# Humanoid Android Robots

- Have we crossed the uncanny valley?
  - Where are robots going
  - We've looked a bunch of recent articles, anyone else have one

# Humanoid Android Robots

- Have we crossed the uncanny valley?
  - Where are robots going
  - <https://www.youtube.com/watch?v=IfHt2fbLszo>
- Longer video, but a good summary of where robots are now and where they might go soon
- What I find odd is the huge disparity in 'gender' appearance.
  - Though one of our articles did cover this.



# Human Acceptance

- Human acceptance increases
  - not just for appearance
  - but for ease of classification
  - this robot is intended to X and I can work with that
  - 3 classification metrics humans use
    - Type classification
    - role classification
    - behavioral classification

# Type classification

- Based on humans ability to figure out what the robot is supposed to do
  - situate robot in environment that lends itself to robot's function
  - give robot essential features of the item that currently does the job

# Role Classification

- What is the robot's role
  - Mentor?
  - Servant
  - Peer?
  - If the human can easily classify the robot's role
  - and robot can stay in that role
  - Will be more accepted.

# Behavior classification

- If it is clear to the human how the robot will behave
  - Will be better accepted.
  - Same with people
  - Not good:
    - “What the \$%^& are you doing?”
  - Better:
    - I think I know what it is trying to do.
  - Best:
    - Doing just what I expected with an occasional nice (helpful) surprise



# Human Acceptance

- It turns out we aren't doing that well on human acceptance.
- <https://ece.gatech.edu/news/2023/12/people-think-robots-are-pretty-incompetent-and-not-funny-new-study-says>
- <https://www.cnrs.fr/en/press/less-human-robots-are-more-readily-accepted>

# Why should we care?

- Why do **we** care about social robots?
  - We aren't doing that research after all

# The Future?

- What do you see as the future in this area?

# Affective Robotics

- New-ish field
  - Emotional robotics
  - To be Continued.