

# Survey of Chemistry I (CHEM 131)

*Syllabus – Fall 2009*

**Instructor** Frank R. Gorga, Ph.D.  
314A Conant  
508.531.2827 (Please leave a message and if you require a response and clearly indicate a phone number where I can reach you.)  
fgorga@bridgew.edu (This is the best way to contact me.)  
<http://webhost.bridgew.edu/fgorga>

Office Hours: Mon  
Tues

Other times by appointment

## Course website

This document, and many others, along with other useful and pertinent information can be found on the course website: <http://webhost.bridgew.edu/fgorga/courses/CHEM131/>

I recommended that you bookmark this site and refer to it often during the course of the semester.

## Introduction

Survey of Chemistry I is the first course in a two-semester sequence that surveys topics from “General” Chemistry, Organic Chemistry and Biochemistry. These topics are usually covered over a minimum of six semesters in the traditional chemistry curriculum. Thus, by necessity, the coverage of these subjects in two semesters is “a mile wide and an inch deep”.

This semester (CHEM 131) we will cover topics from “General” chemistry. If you stick around for the second semester (CHEM 132) we will cover topics in organic chemistry and biochemistry.

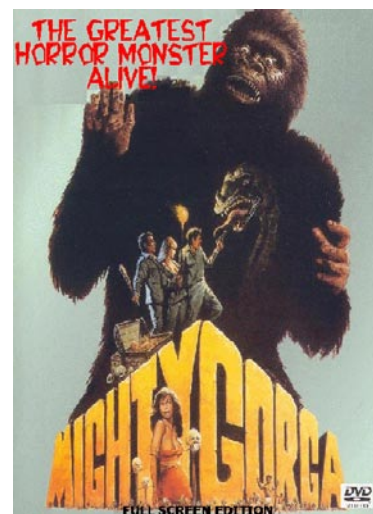
A detailed course outline is posted on the course website (see above).

## Text Book

Hein, M., et al.  
Introduction to General, Organic and Biochemistry, 9<sup>th</sup> Edition, Wiley & Sons, NY  
(<http://he-cda.wiley.com/WileyCDA/HigherEdTitle/productCd-0470129255.html>)

This is a required text. I will be assuming that you have read it and will be assigning homework problems from it regularly.

Student Companion Site:  
<http://bcs.wiley.com/he-bcs/Books?action=index&itemId=0470129255&bcsId=4272>



## The Laboratory

The laboratory is an integral part of this course. This semester, there is only one lab section and the instructor is Mrs. Iana Mandravel-Hutchins (203A Conant , 508.531.2985, ihutchins@bridgew.edu)

Mrs. Hutchins will be providing you with a separate lab syllabus describing her academic policies.

Handouts for each laboratory are available on the web at: <http://webhost.bridgew.edu/ihutchins>. A link to this site may be found on the course website. Lab handouts must be printed out and read ahead of each lab period; many of them have pre-lab exercises that must be completed ahead of time.

## Assessment of Student Performance / Academic Policies

The lecture portion of this course counts for 75% of the final grade and the laboratory portion for 25%. However, one must earn a passing grade in both sections in order to pass the course. In other words, a grade of "F" in either portion will result in a course grade of "F".

Assessment in the lecture portion will consist of three exams during the course of the semester, a cumulative final exam and home work assignments.

These are weighted as follows:

Exam 1:	100	points	(12.5% of final grade)
Exam 2:	100	"	(12.5%)
Exam 3:	100	"	(12.5%)
Final Exam:	200	"	(25%)
Homework:	<u>100</u>	"	(12.5%)
<i>Lecture</i>			
<i>Subtotal:</i>	<i>600</i>	<i>"</i>	<i>(75%)</i>
Lab:	<u>200</u>	"	(25%)
<i>Total:</i>	<i>800</i>	<i>"</i>	<i>(100%)</i>

The exact date of Exams 1-3 will be announced in class, well ahead of time) as the semester progresses. The final exam will be held according to the College's official final exam schedule.

Make up exams and assignments are not available; nor is extra credit.

The points from missed exams will be added to the final causing it to be weighted more heavily than normal. Late homework assignments will not be graded.

Lab work is due according to the schedule provided by the lab instructor. Late and missed lab work are governed by the policies outlined in the lab syllabus.

The College's Academic Policy (<http://www.bridgew.edu/catalog/ugpol.pdf>) is in effect at all times; students are particularly reminded to review the sections on academic integrity and classroom conduct.